

Cello C

William Tell Overture

Rossini

226 **Allegro Vivace** (♩ = c. 152) H

18

pp

Detailed description: This block contains the first musical staff, starting at measure 226. It is in the key of D major (two sharps) and 2/4 time. The tempo is marked 'Allegro Vivace' with a quarter note equal to approximately 152 beats per minute. A rehearsal mark 'H' is placed above the staff. The first measure is a whole rest, followed by a measure with a dynamic marking of '18'. The staff contains a series of eighth and quarter notes, with a dynamic marking of *pp* (pianissimo) below the notes.

250

ff *pp*

Detailed description: This block contains the second musical staff, starting at measure 250. It continues the melodic line with eighth and quarter notes. The dynamic marking *ff* (fortissimo) is placed below the first measure, and *pp* (pianissimo) is placed below the second measure.

258

ff *ff*

Detailed description: This block contains the third musical staff, starting at measure 258. It features a more active melodic line with eighth and quarter notes. The dynamic marking *ff* (fortissimo) is placed below the first and second measures.

265

Detailed description: This block contains the fourth musical staff, starting at measure 265. It continues the melodic line with eighth and quarter notes.

272 I

pp

Detailed description: This block contains the fifth musical staff, starting at measure 272. A rehearsal mark 'I' is placed above the staff. The staff contains a series of eighth and quarter notes, with a dynamic marking of *pp* (pianissimo) below the notes.

288

ff *pp*

Detailed description: This block contains the sixth musical staff, starting at measure 288. It features a series of eighth and quarter notes, with dynamic markings of *ff* (fortissimo) and *pp* (pianissimo) below the notes.

296 K

ff *ff* *tutta forza*

Detailed description: This block contains the seventh musical staff, starting at measure 296. A rehearsal mark 'K' is placed above the staff. The staff contains a series of eighth and quarter notes, with dynamic markings of *ff* (fortissimo) and *ff* *tutta forza* (fortissimo, with full force) below the notes.

304

Detailed description: This block contains the eighth musical staff, starting at measure 304. It continues the melodic line with eighth and quarter notes.

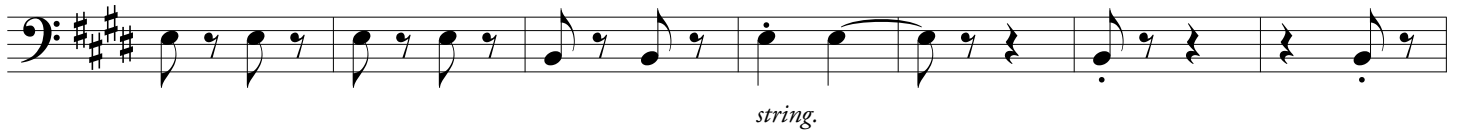
312



388



396



403



410



417



423



431



439



447

6 G.P. Q

sf

458

464

469

4